

My Career Insights  
**Georgia Bourke**  
Murrayside School  
01 April 2022

# Supporting You

## Welcome

Welcome to your Morrisby career analysis.

Whether you are just beginning to consider career or study options, or you are looking for a change in career, we are here to inspire and help you realise your potential.

This report is the beginning of your journey with us. Everything in this document is personalised to you and based on what we have found out about you so far. At any time, you can log in to your personal area on our website, re-visit your results, research the pathways into careers, investigate job specific information and also search for courses and research apprenticeships.

When reading this report, please remember that we are not here to tell you what to do, but to give you the tools and information to support you in making the right decisions for you.

## Log-In For Life

No two people are exactly the same. Because tastes, preferences and the things that motivate and inspire us can change over time, you have a log-in to Morrisby Profile for life. This means that you can come back at any time in the future to investigate different options and we can be there to support you at all of the important educational and career decisions you will need to make.

---

## About Us

Deciding on a career is not easy. Understanding the options available to you in the first place is hard enough, but then working out what you are best suited to, and how you can achieve your goals, is difficult.

With our expert analysis, we can help to make your journey easier by giving you the tools to aid your decision making.

- Established in 1967, we are world leading developers of Careers guidance systems and services.
- Experienced providers of matrix accredited and ISO quality assured Careers information, advice and guidance.



# Contents

<b>Using This Analysis</b> How to interpret your results	<b>3</b>
<b>Aptitudes</b> Explanation of your aptitudes results	<b>4</b>
<b>Aptitudes – What is Being Measured?</b> A breakdown of what the different aptitude scores mean	<b>6</b>
<b>Interests</b> Your attitude to working with people, information and things	<b>8</b>
<b>Your Work Style</b> How you go about solving problems, what motivates you and how you like to work	<b>10</b>
<b>Organisational Role</b> Organisation and role that you aspire to	<b>11</b>
<b>Workplace</b> Where you would most like to work	<b>12</b>
<b>Personality</b> Your personality type	<b>13</b>
<b>Learning Style</b> How do you learn best	<b>14</b>
<b>The Journey Ahead</b> How to get where you want to go	<b>16</b>
<b>Career Suggestions</b> Those that best match your own abilities and interests.	<b>18</b>
<b>Planner</b> Your favourite careers, subjects and courses	<b>20</b>

# Using This Analysis

## Introduction

When you took your Morrisby Profile assessments, we measured your verbal, numerical, and abstract reasoning as well as your spatial, and mechanical ability. We also took a subjective snapshot of your interests, preferences and motivations.

We then analysed all of your results, which were presented to you on our website. This report is a summary of what you have seen on the website so far. In addition to this report, your own personal webspace also features:

- Career suggestions tailored to your abilities, interests, personality and preferences  
Help with choosing Year 11/12 subjects
- Suggestions for Higher and Further Education based on your make-up and career intentions
- Thousands of links to further information covering careers, education and training

All of the results and recommendations are available both in this report and in a dynamic and interactive format on our website.

Every time you make a change to your preferences on Morrisby Profile, this report will update and you can download it again.

---

## IMPORTANT

We want this analysis to help inform and support your decisions for the future. As with all assessments, the results reflect your performance and feelings on the day. We hope and expect these to be accurate, but on occasions, people do not perform as well as they should. If you feel that your results are not a true reflection of you, please talk it over with a careers adviser.

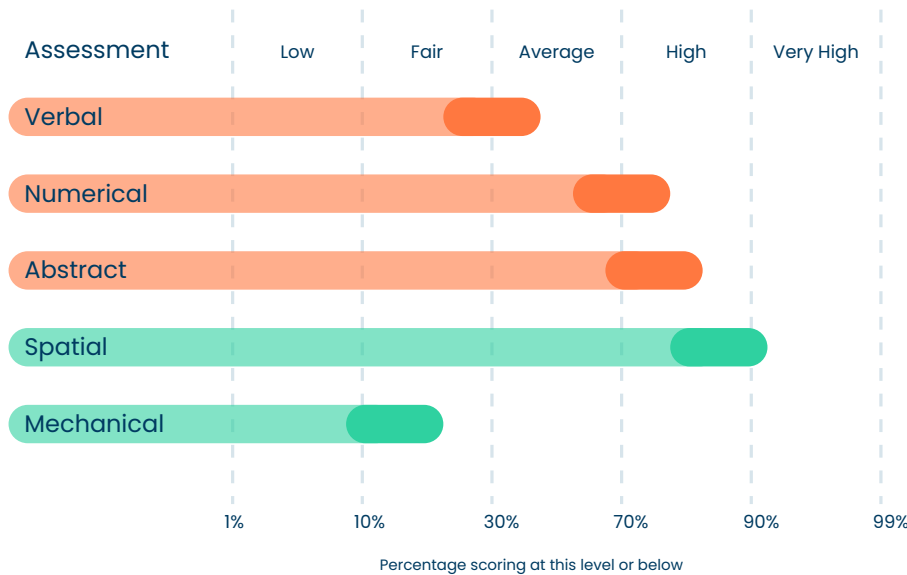
---

# Aptitudes

## Your Aptitudes

The assessments you completed measured your verbal, numerical, and abstract reasoning as well as your spatial, and mechanical ability. Your results have been analysed and compared with others of a similar age to you. Please remember that this is not about measuring individual scores, but understanding where your relative strengths lie.

We use this information to build a picture of you and to identify your potential. This profile also informs your career suggestions.



## Verbal, Numerical & Abstract

Your high abstract and numerical results with the lower verbal, suggest that you might prefer working with real things, diagrams, plans, numbers and quantities. These are useful skills for technical, practical and some commercial careers. You may prefer learning from experiments, charts, models, videos and your own experiences, rather than from books or lectures. You should consider the types of career which match this profile, such as engineering and technology, surveying, building and construction, agriculture, manufacturing industries, laboratory work, healthcare, as well as many areas in commerce and industry.

## Spatial and Mechanical

You achieved a high score on the spatial assessment but surprisingly you didn't do well on the mechanical. This is a big difference and perhaps you just don't have direct experience of mechanics or perhaps something happened to limit your performance in the assessment. As it stands machinery does not seem a sensible career focus for you. You are a practical, down-to-earth person with high levels of ability when it comes to working with real objects, plans and diagrams. You are likely to prefer jobs which have some practical outcomes and are not totally theoretical or paper-based.

# What is Being Measured?

## Verbal

This assessment measures the ability to use words and indicates potential in dealing with verbal information, whether written or spoken. High scores can indicate a comfort in reading, writing, and speaking. Careers which need this ability include areas where verbal communication is important. Areas in media, advertising, teaching, law, journalism and sales. A relatively strong score can suggest a preference for learning in a more traditional way, through books, discussion and attending lectures.

## Numerical

The numerical assessment measures how comfortable you are when working with quantities and numerical information. High scorers tend to have an insight into numerical relationships and, if this is their dominant ability, they may be inclined to adopt a logical, quantified and calculated approach to problem solving. They may have a preference for weighing up the pros and cons of any given situation which may lead them to appear rather objective and perhaps even a little less compassionate as a result. A high numerical score would indicate a preference for work in fields where numerical, quantitative analysis is key. Areas in finance and commerce could be well suited; such as banking, insurance, accountancy, trading, logistics, surveying and the like. Many areas in science and technology, including IT, may also be well suited to this type of analytical approach.

## Abstract

This assessment measures the ability to deal with complex problems presented diagrammatically. Those with a relatively strong score on this measure may show a preference to view the world directly or through diagrammatic representation rather than through the medium of words or numbers. This can lead to a preference for dealing with real things and visual information such as charts, diagrams and pictures. High scorers appreciate the physical relationships between things and if it is their dominant ability, may well prefer learning through direct observation and personal experience, rather than through discussion or through verbal or numerical descriptions. As such, they might be more comfortable with demonstrations, and experiential learning in preference to a book-based approach. This type of ability is linked with many technological and scientific areas, as well as directly practical pursuits. Engineering, construction, sciences, agriculture, transport and design all involve working with the physical world directly in line with this type of ability.

## Spatial

Spatial ability is the capacity to appreciate and mentally manipulate the spatial relationships amongst objects. With this measure, the task was to

move 2-dimensional objects in a 3-dimensional space. This ability is particularly important when working with distances, orientations, and the physical relationships between objects, in other words their positioning. It is easy to imagine how this type of ability is important for architecture and design, but it is also important when it comes to planning or controlling the physical positioning of any objects, be they electronic components on a chip, or aircraft at an airport. Those with relatively strong spatial ability may be more concerned with the relationships between individual items rather than on the items themselves, giving them a holistic or strategic focus.

## Mechanical

Like Spatial ability, this is related to the real physical world but instead of looking at how items are positioned relative to one another, mechanical ability focuses more tightly on how different components interact with one another. This is the world of levers, cogs, wheels, momentum, as well as physical forces – gravity, friction, tension and spring. These are the interactions that reflect why our world behaves as in the way it does. The assessment does not require any specialist knowledge and a high score indicates an ability to identify and predict how these various elements will interact and to predict the outcome. This type of ability is useful in areas concerning the interactions of components. Engineering, technology and construction are the obvious examples. People whose mechanical ability is stronger than the spatial may be more focused on the interactions within a single component than the overall layout. As a result, they may seem to have a detailed, serialist approach to solving practical problems.



# Interests

## Introduction

This section examines the findings from the Aspirations Questionnaire. This asked you about your career interests, your specialist interests and any preferences you might have about your work environment, the type of organisation or your role within it. Your results are shown and described on the following five pages. On the website you will also find a breakdown showing how well your results support working in each of 49 different career areas.

## Your Interests

We asked you questions about your attitude to working with people, information and things and how important each one was to you. You can see the results below. Remember, this is based on what you told us and you can amend your responses at any time.

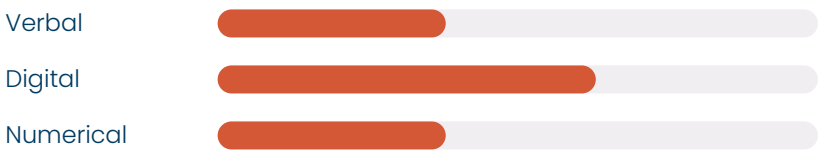
**You**

- > Artistic
- > Design
- > Persuading
- > Influencing
- > Data Analysis
- > Programming

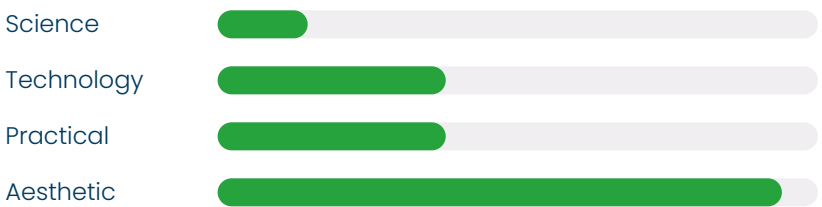
### People



### Information



### Things



You are most interested in working within art and design where the goal is to make the world more attractive, more comfortable and a better place to be. From interiors and fashion to graphics and fine art it also encompasses photography, film, multimedia, product design and landscapes. Additionally you appear interested in the types of career where you would be working with people in a professional, rather than personal manner. You would enjoy

guiding them to make the best decisions. This might include management, sales, politics, marketing, advertising, broadcasting and many others. You also show some interest in working in modern digital systems. This includes hardware, networking and communications, software development, data management, data mining and analysis, games design and programming, multimedia, security and many others. It is a massive, and expanding sector requiring a multitude of skill-sets. The results show that you are not interested in working as a scientist or other career relying on the scientific methods of hypothesis testing through experimentation, observation and analysis. Additionally you are not interested in spending your time writing or working with the written word or verbal communication. Neither would you seek out working in numerical analysis and careers revolving around finance and purely commercial activities. Nor on working as an engineer, being responsible for the design and construction of the machinery, structures and processes which shape modern life. Lastly, you are not keen on working in a directly practical area; jobs which involve making, maintaining or moving physical objects.

## Your Specialist Interests

Specialist Interests may form an important part of your career choice, or you might prefer to keep them separate to your job. You can decide on how much they should influence your career suggestions by selecting "Specialist Interests" when choosing what to focus on, on the website.



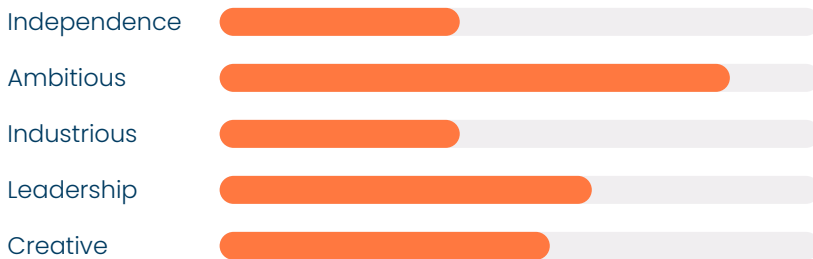
Art

Of the five areas (music, sport, performing arts, languages, art & design) you seem very interested in art & design.

# Your Work Style

## Work Style

Here we are looking at how you go about solving problems, what motivates you and how you like to work. The graphs below are based on what you have told us so far.



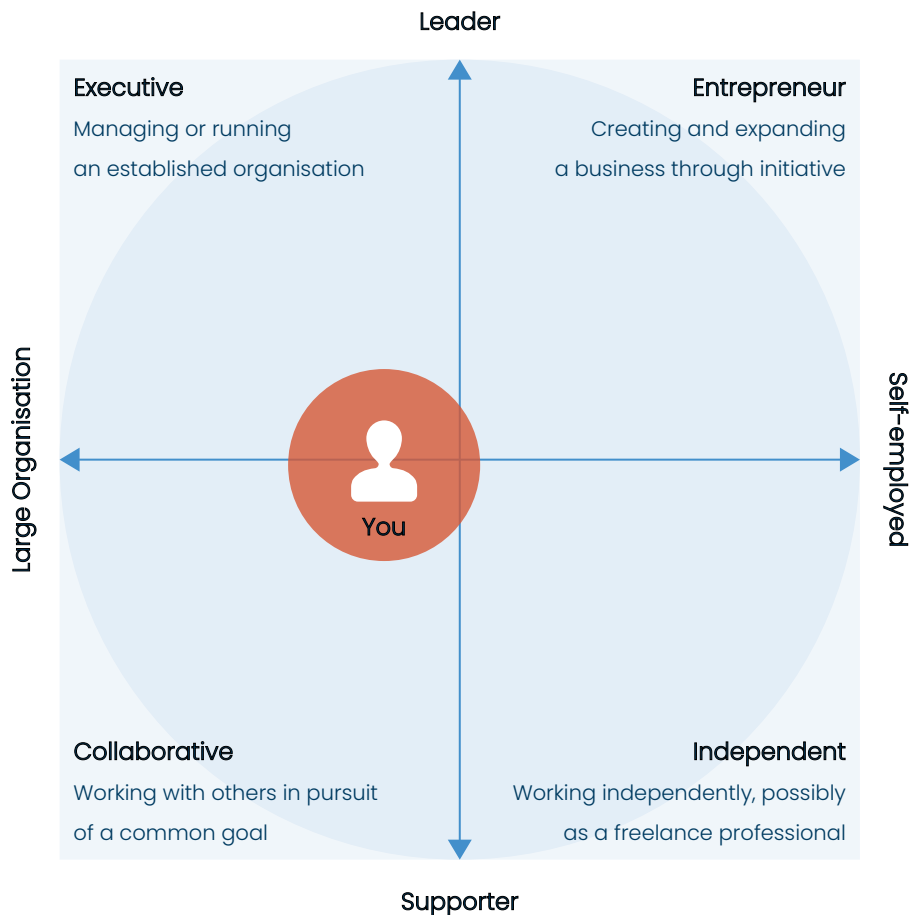
You want to succeed and are likely to set yourself very ambitious targets. It is important for you to achieve your goals and you want to work in an area where you can personally make a real difference. You appear to be comfortable with the idea of being the leader within a group of people. You are prepared to take responsibility for the actions of others and could therefore develop a career managing and/or advising other people. You like to work in your own way and would prefer a career that offered variety and the opportunity to do things as you see best rather than following a set procedure. Your answers suggest that you would probably prefer working within an established organisation, where you have a defined role. Currently you don't wish to set up on your own and employ other people. You are not particularly industrious when it comes to a career. You would prefer to keep your work life balance towards the 'life' side and would like a career that does not end up taking over your life.

### You

- > Ambitious
- > Determined
- > Leader
- > Manager
- > Down-to-Earth
- > Realistic

## Organisational Role

This graph shows the type of organisation and role that you aspire to. We work this out by looking at your preferred role in an organisation (from team member to leader) and comparing it with the type of organisation you want to work in (from a large multi-national, to working for yourself) You may find that these attitudes can change over time, remember, you can update the results by re-taking the aspirations questionnaire.

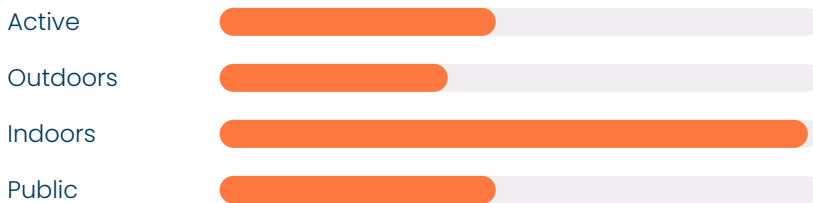


You would probably be equally content in a variety of roles, but would prefer working for an established, structured organisation which would offer some support and stability. You seem happy to lead a team when required but equally content to pitch in with your colleagues. You would like to stand-out but not be completely independent.

# Workplace

## Your Preferred Work Environment

This is what you told us about where you would most like to work; whether you prefer the idea of being inside or outside and how important it is to you to work alone or with others.



It is important to you that you work in pleasant surroundings, something like a comfortable, well-designed and well equipped building. This appears to be the most important aspect of the environment to you. You are not keen on a physically demanding job, working outside nor one where you are constantly meeting many new people.

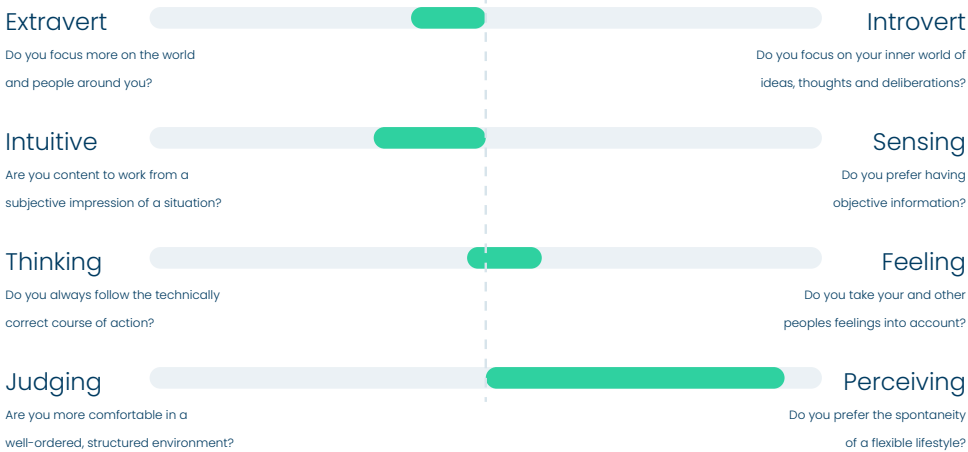
### You

- > Nice Surroundings
- > Work with Friends
- > Non-physical

# Personality

## Your Personality Type

Personality describes the way we think, feel and behave - in short, it is what makes us unique. When considering careers, we often think about having the right skills and qualifications, but having the right personal qualities can be just as important. Our personality type, and the way we act and behave will influence our suitability for some careers more than others. This profile also informs your career suggestions.



**Idealist**

- > Spontaneous
- > Tolerant
- > Impulsive
- > Serendipitous
- > Insightful
- > Persuasive

Inventive - Enjoys a challenge and thinking outside the box, enthusiastic, versatile, strategic, enterprising, inquisitive.

The most strongly defined aspect of your results is that you prefer a spontaneous lifestyle. You want to be ready to embrace opportunities from wherever they arise and do not want to be bogged down by commitments. Some planning and organisation is essential but you prefer to keep that to a minimum so that you can be responsive and flexible.

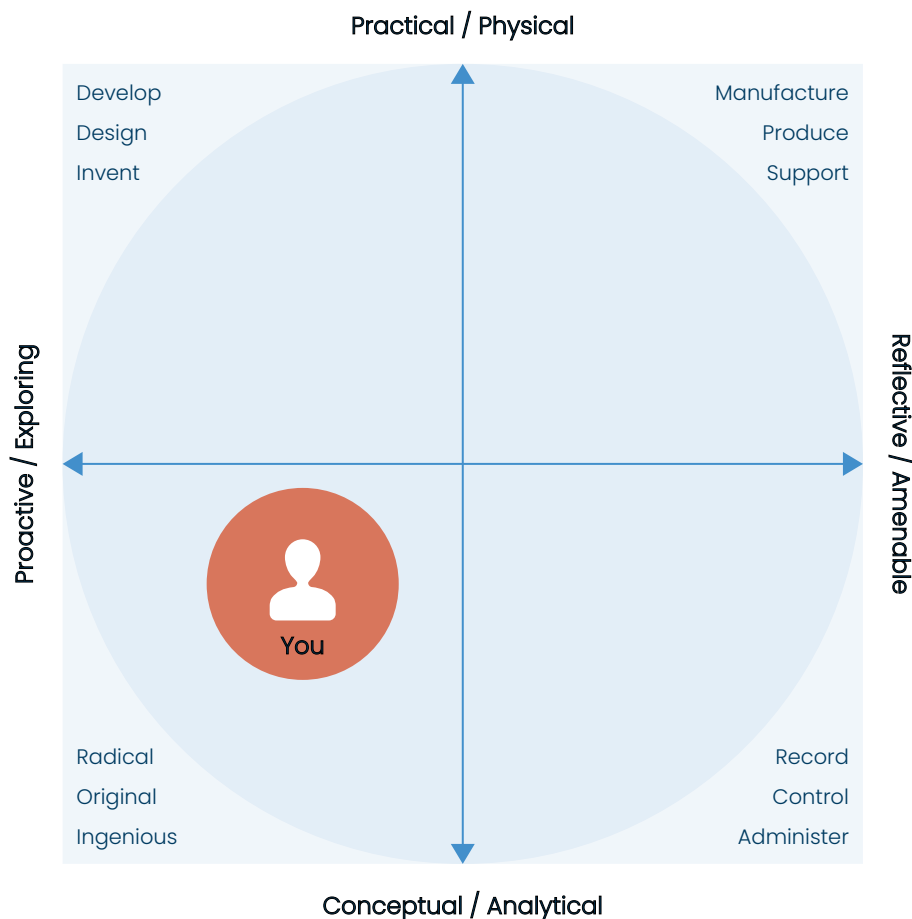
Also of importance is your preference for developing ideas, mentally exploring new possibilities and breaking with tradition. You are keen to use your imagination and are comfortable in the worlds of art, literature and emotions.

Also of importance is your extraversion result. You enjoy being in the company of others and being the centre of attention. You want to live in the here-and-now and enjoy sharing new experiences with others. When it comes to making decisions, sometimes you will base these on your feelings towards the situation and other times you will analyse the facts to help you decide; or perhaps use a bit of both. You can see the value of both the logical and the emotional approach to resolving problems and making decisions.

# Learning Style

## How do you learn best?

People continue to learn throughout their entire lives. Some things need a direct practical approach; it's difficult to learn to ride a bike, or play an instrument, just from a book. Other things are suited to a more academic approach; Maths and Literature, History and Philosophy. Some require a bit of both; Science, Geography and IT. In addition, many other attributes will influence how and what you prefer to learn. Which do you find more memorable; hearing something, seeing it, or physically handling it? Do you like to challenge and question information, or are you more accepting of the facts presented to you? Are you someone who prefers to know a great deal about one thing, or who wants to be aware of a whole range of things, but without going too deep into them? Do you like to learn within an enthusiastic group or to work alone at your own pace?



The results indicate that you are an ideas person, as shown on the graph above. You like to think things through, explore options and appear willing to

challenge other people's ideas and perceptions. People are likely to view you as imaginative. You might find it difficult to maintain focus as your mind is likely to wander and you can become distracted quite easily. It would be to your advantage if you could counter this in learning situations. Perhaps following a more structured study plan and keeping notes should help you stay on track.

## Working with others or individually?



Some people are most comfortable working on their own, others are happier working with others in a group.

You tend to feel more comfortable working alongside others rather than working completely on your own. You are likely to find more motivation when part of a group. It is important that you develop your own study skills so that you can learn and apply yourself independently as there are occasions, like exams for example, where you need to be able to do well even though you are on your own.

## How do you focus?



When faced with a complex problem, some people like to break it down into many small problems and then set about tackling each of these separately. Others will look at the entire problem and work to develop an all-embracing solution, which they then refine over time.

Your scores suggest that you very much prefer to take an overall view of the situation, to work out what you want in the end, rather than concentrating on the details. This means that you are probably good at planning ahead and deciding how things should turn out but you may miss some details and dislike being faced with unexpected changes in the overall aim.

You seem to be more of a 'global' learner and are likely to prefer taking a general overview to having to consider a sequence of small details.



# The Journey Ahead

## Introduction

This next section of your report is all about looking to the future. We have assessed and analysed your specialist interests and abilities and now it is up to you to decide how you want to use them.

You will now see a summary of the careers, subjects and options that you have shortlisted and also the ones that we recommended to you. You can go back to the website at any time to update or change these. Each time you do so, this report will update.

Remember, none of this is set in stone. You can re-visit the website whenever you like, to research study and career options or to update the answers to your questionnaires.

## Career Suggestions

The career suggestions that you are about to see have been selected from a list of over 600 occupations. We have short-listed them for you because they match your particular abilities and interests.

These are not the only jobs for you to think about. You may have other career ideas that you want to investigate. You can easily do this by visiting our website. Once you add a career to your favourites, it will show up on this report.

## Subject Suggestions

The subject suggestions are made based on your results on the various questionnaire and assessments but are also graded according to how useful they would be for the suggested careers and any careers which you have favoured. Ideally these will be subject suggestions which both enable your intended career path(s) and which you will find interesting and well suited to your make-up. But sometimes compromises have to be made and if there is a conflict between needing to study a subject to enter your chosen career and your interest or ability to do well in that subject, then it might be best to speak with an Adviser.

## Factors to Focus On

Our career recommendations have all been made by measuring many different factors about you, including your specialist interests, working preferences, aptitudes, personality and working style. Some of these may be more important to you than others. On the website, you can select the factors you want to focus on to tell us how much we should take them into account when making our suggestions. You can re-visit this at any time.

You can also decide how far you want to take your studies. Your career suggestions will be amended accordingly.

# Career Suggestions

The longer the rating bar, the better suited the subject is to your interests, preferences, career suggestions and also your career favourites. Before finalising your choices, remember to check that your preferred careers and education routes will remain open to you.

This list of careers takes your personal preferences into account. You can manage this by adjusting the mixer on the website.

Further information about each of these careers and subjects is available on [www.morrisby.com](http://www.morrisby.com).

Career suggestions when focusing on Specialist Interests as you requested. Selected qualification level: Degree

---

## Graphic Designer



## Fashion Designer



## Interior Designer



## Multimedia Designer



## Retail Buyer



## Advertising Art Director



## Artist / Sculptor



## Conservator



## Auctioneer and Valuer (Art)



### Photographer



### Advertising Account Executive



### TV / Film Editor



The following careers are closely related to the twelve above, so might also be worth investigating further.

### Costume Designer



### Animator/Games Artist



### Advertising Media Planner



### Photojournalist



### Merchandise Planner



### Special Effects Technician/designer



# Planner

## Introduction

This page shows a summary of any careers, subjects or courses that have been suggested or that you have added to favourites when using the tools on the website. These subject suggestions are based on your interests and how useful they might be to you in the future. However, you need to consider any specific subjects required by any intended career routes.

You can add or amend these at any time by going back to the website.

## Your Selected Careers

### Graphic Designer



### Fashion Designer



### Textile Designer



### Web Designer



### Stage/set Designer



### Health and Fitness Instructor



## Options at 16 Introduction

Online, all VCE and VET subjects in Victoria are listed in order of suitability for you, based on your abilities, interests, personality and any careers which you have started in the Careers tab. The first 12 of these are presented in your printed report.

Note that Maths and English may not appear in this list and also that VCAL is not included as this is a study type rather than a specific subject.

## Your Preferences

### Senior Secondary Subjects

#### Art



#### Visual Communication Design



#### Studio Arts



#### English/EAL



#### Applied Computing



#### Mathematics - General/ Further



## Vocational Routes

### Graphic design

Key Area

### Interior design and decoration

Key Area

### Stage, costume and set design

Key Area

## Your Options at 16

### Senior Secondary Subjects

#### VCE (VET) Creative and Digital Media



## VCE (VET) Applied Fashion Design and Technology (unscored VET study)



## Industry and Enterprise



## Product Design and Technology



## VCE (VET) Business



## Media



## VCE (VET) Small Business (unscored VET study)



## VCE (VET) Hospitality



## VCE (VET) Hair and Beauty (unscored VET study)



## VCE (VET) Information, Digital Media and Technology



## Business Management



## English Language



## Selected Options at 18+

### Degree or higher

#### Art and design

Key Area

#### Textiles and fashion design and fabrication

Key Area

## Graphic design

Key Area

## Fine art

Key Area

## Photography, digital and media arts

Key Area

## Interior design

Key Area

## Web design/internet technology

Key Area

## Options at 18+

### History of art and design



### Game and multimedia design



### Media and communication studies



### Stage management, costume and set design



### Crafts and 3D design





# Considering Education

## 16-18 Choices

Choosing school examination subjects are some of the most important decisions you will make about your education, as they can impact your future career and the choices available to you.

Try to choose subjects that:

- You find interesting and enjoyable so that you can complete the course
- You are good at and that suit your style of learning
- Fit into your future plans.

If in any doubt, you should speak to your school.

## 18+ Choices

Choosing whether to go straight into employment, take the apprenticeship route or go into higher education can be a difficult decision to make. Higher education is a huge investment in both time and money. If you are choosing this route, be sure that:

- You choose a course that you are good at, you find interesting and that you can do well in
- You choose a university that suits you and your learning style
- The degree fits in with your future and your career aspirations.

## Choosing a Career

Throughout this process, we have looked at your aptitudes, aspirations and certain aspects of your personality to suggest and help you discover the different career options available to you. Your career and your future are now in your hands.

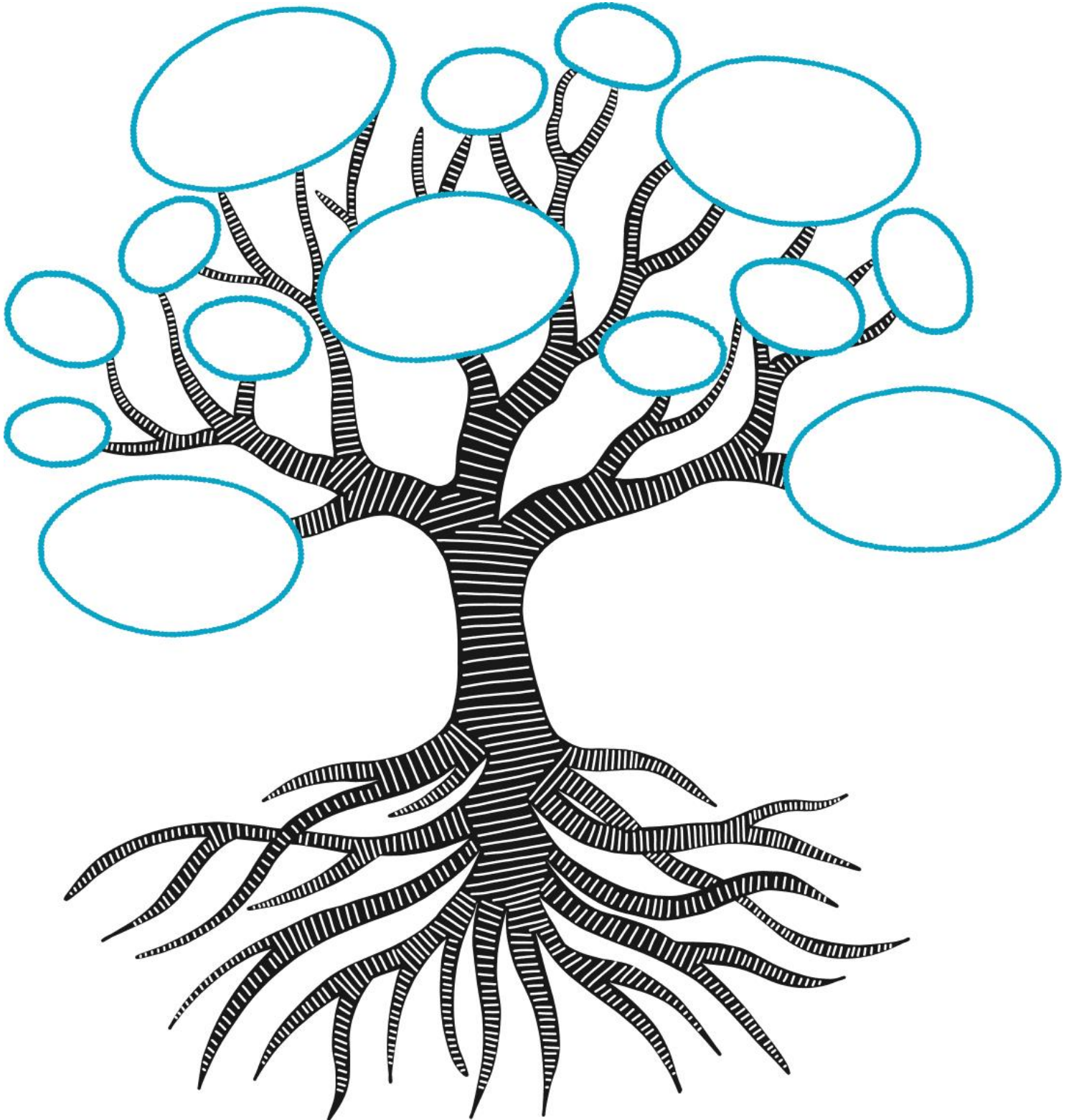
Deciding on a career is one of the most important decisions you will ever have to make, so you need to know as much as possible about yourself, about possible careers and how to go about entering them. After interacting with our website and reading this report and perhaps talking it over with your family and careers adviser, you are probably now aware of where your greatest strengths lie and how they fit in with your interests.

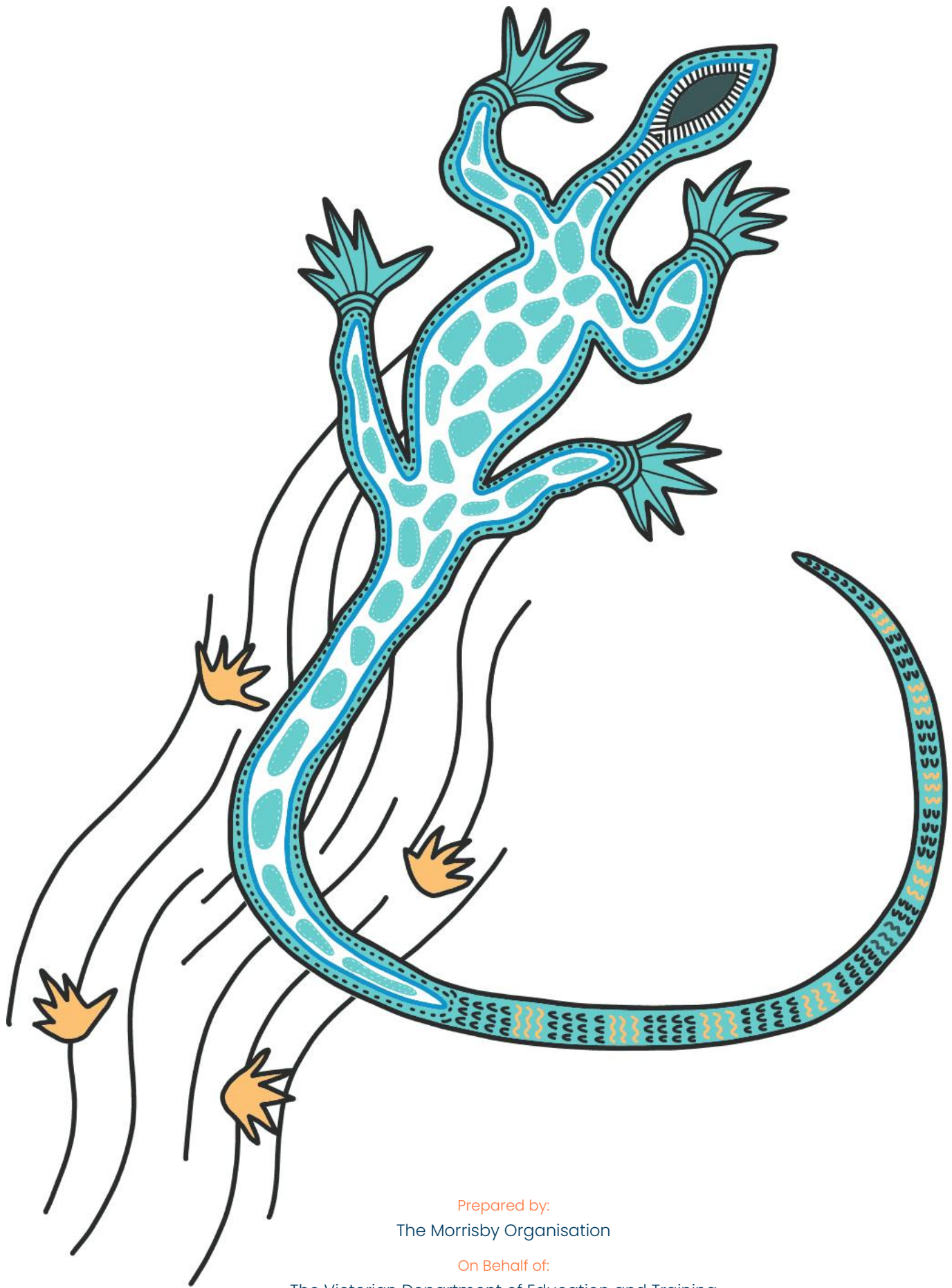
You may need to take action soon, such as deciding on subject choices or whether to pursue further study or a more vocational college course, or apprenticeship. If you are considering subject choices, it is important to make sure that you do not shut off too many options at this point, by dropping subjects which would be essential for a career you are still considering.

We hope that you have enjoyed this process with us and that you have found it to be a thought provoking experience. Do remember that you can log in to our website at any time to return to your results, re-take your aspirations questionnaire and investigate different career options.

# My Career Insights

Use this tree to record words that describe your strengths, goals, aspirations. Add them to the leaves, branches and roots. You can complete this activity during your “unpacking” interview, or a little later.





Prepared by:

The Morrisby Organisation

On Behalf of:

The Victorian Department of Education and Training

Support:

[support@ceav.vic.edu.au](mailto:support@ceav.vic.edu.au)

Cover and Tree Illustrations:

[hello@laceyyeomans.com](mailto:hello@laceyyeomans.com)

Further Information:

[www.careeranalysts.com.au](http://www.careeranalysts.com.au)

Access your Morrisby account at <https://www.morrisby.com>