



My Career Insights
Maddie Demo
Murrayside School
01 April 2022

Supporting You

Welcome

Welcome to your Morrisby career analysis.

Whether you are just beginning to consider career or study options, or you are looking for a change in career, we are here to inspire and help you realise your potential.

This report is the beginning of your journey with us. Everything in this document is personalised to you and based on what we have found out about you so far. At any time, you can log in to your personal area on our website, re-visit your results, research the pathways into careers, investigate job specific information and also search for courses and research apprenticeships.

When reading this report, please remember that we are not here to tell you what to do, but to give you the tools and information to support you in making the right decisions for you.

Log-In For Life

No two people are exactly the same. Because tastes, preferences and the things that motivate and inspire us can change over time, you have a log-in to Morrisby Profile for life. This means that you can come back at any time in the future to investigate different options and we can be there to support you at all of the important educational and career decisions you will need to make.

About Us

Deciding on a career is not easy. Understanding the options available to you in the first place is hard enough, but then working out what you are best suited to, and how you can achieve your goals, is difficult.

With our expert analysis, we can help to make your journey easier by giving you the tools to aid your decision making.

- Established in 1967, we are world leading developers of Careers guidance systems and services.
- Experienced providers of matrix accredited and ISO quality assured Careers information, advice and guidance.



Contents

Using This Analysis How to interpret your results	3
Interests Your attitude to working with people, information and things	4
Your Work Style How you go about solving problems, what motivates you and how you like to work	6
Organisational Role Organisation and role that you aspire to	7
Workplace Where you would most like to work	8
The Journey Ahead How to get where you want to go	9
Career Suggestions Those that best match your own abilities and interests.	11
Planner Your favourite careers, subjects and courses	13

Using This Analysis

Introduction

When you took your Morrisby Profile assessments, we took a subjective snapshot of your interests, preferences and motivations.

We then analysed all of your results, which were presented to you on our website. This report is a summary of what you have seen on the website so far. In addition to this report, your own personal webspace also features:

- > Career suggestions tailored to your abilities, interests, personality and preferences
- > Suggestions for Higher and Further Education based on your make-up and career intentions
- > Thousands of links to further information covering careers, education and training

All of the results and recommendations are available both in this report and in a dynamic and interactive format on our website.

Every time you make a change to your preferences on Morrisby Profile, this report will update and you can download it again.

Interests

Introduction

This section examines the findings from the Aspirations Questionnaire. This asked you about your career interests, your specialist interests and any preferences you might have about your work environment, the type of organisation or your role within it. Your results are shown and described on the following five pages. On the website you will also find a breakdown showing how well your results support working in each of 49 different career areas.

Your Interests

We asked you questions about your attitude to working with people, information and things and how important each one was to you. You can see the results below. Remember, this is based on what you told us and you can amend your responses at any time.

You

- > Caring
- > Supportive
- > Data Analysis
- > Programming
- > Commerce
- > Analysing

People



Information



Things



You are most interested in a career where you care for other people on a daily basis. Perhaps young children, or the elderly or others who for some reason or another need help in looking after themselves. Additionally you appear interested in working in modern digital systems. This includes hardware, networking and communications, software development, data management, data mining and analysis, games design and programming, multimedia,

security and many others. It is a massive, and expanding sector requiring a multitude of skill-sets. You also show some interest in a career dealing with numerical records and quantitative analysis. This often means working in commerce or finance; banking, insurance, trading and brokerage, risk analysis and accountancy. However, all organisations require some numerical analysis so it's an area with many and varied opportunities. The results show that you are not interested in a career working with members of the public at a personal level, helping and guiding them as individuals. Similarly you would like to avoid a career persuading and encouraging people to do the things you want, and that maybe they don't want. Neither do you seem keen on spending your time writing or working with the written word or verbal communication.

Your Specialist Interests

Specialist Interests may form an important part of your career choice, or you might prefer to keep them separate to your job. You can decide on how much they should influence your career suggestions by selecting "Specialist Interests" when choosing what to focus on, on the website.

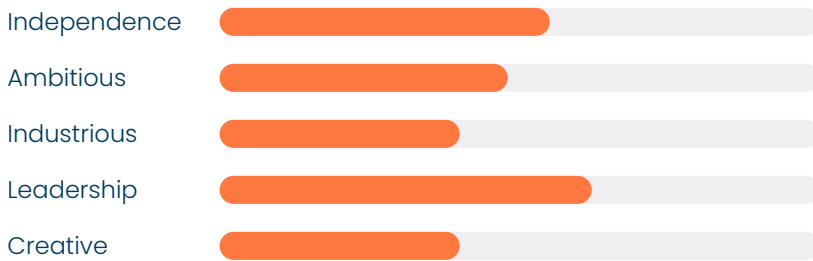


Of the five areas (music, sport, performing arts, languages, art & design) you seem very interested in music and performing arts. You are also interested in careers involving sport and art & design. You are least interested in languages.

Your Work Style

Work Style

Here we are looking at how you go about solving problems, what motivates you and how you like to work. The graphs below are based on what you have told us so far.



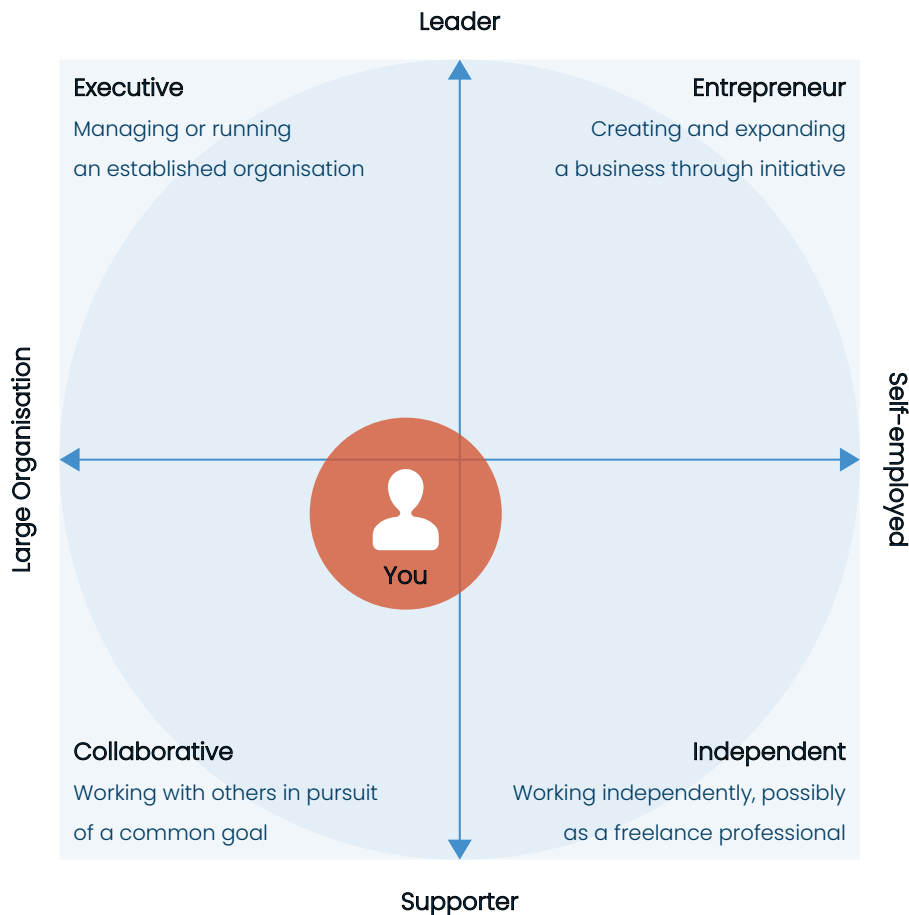
You appear to be comfortable with the idea of being the leader within a group of people. You are prepared to take responsibility for the actions of others and could therefore develop a career managing and/or advising other people. The results show that you prefer to make your own decisions. Whilst you are happy to seek help from others when appropriate, you don't want someone else telling you what to do and how to do it. You are self-sufficient and able to think for yourself but you could also fit into a team. You are not particularly ambitious. You seem more concerned with how you personally view the value of your work, rather than how other people rate it. You are not particularly industrious when it comes to a career. You would prefer to keep your work life balance towards the 'life' side and would like a career that does not end up taking over your life. Your answers suggest that first and foremost you like to find workable solutions to problems. You are less concerned with how novel they are and whether or not they reflect your personality. You appear to focus on efficient, down-to-earth solutions.

You

- > Leader
- > Manager
- > Helpful
- > Modest
- > Realistic
- > Supportive

Organisational Role

This graph shows the type of organisation and role that you aspire to. We work this out by looking at your preferred role in an organisation (from team member to leader) and comparing it with the type of organisation you want to work in (from a large multi-national, to working for yourself) You may find that these attitudes can change over time, remember, you can update the results by re-taking the aspirations questionnaire.

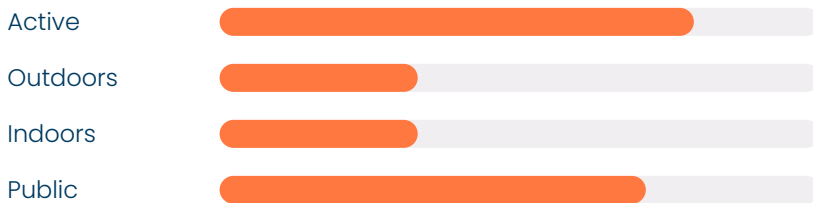


Your results suggest that you would prefer to work in an established, fairly large organisation. A well defined job with fixed responsibilities is likely to be best suited. You don't seem particularly keen to take the lead or manage other people, preferring a more team-based role.

Workplace

Your Preferred Work Environment

This is what you told us about where you would most like to work; whether you prefer the idea of being inside or outside and how important it is to you to work alone or with others.



You would like to be physically active in your work as well as work with a variety of people. There are many careers in the service industries that combine these two. Possible areas range from travel, sports, leisure, hospitality and entertainment through to medicine, police, and the armed services. It appears that your work environment is not as important to you. What makes the difference for you is who you work with as well as the opportunity to be reasonably active.

You

- > Meeting People
- > Active
- > With the Public

The Journey Ahead

Introduction

This next section of your report is all about looking to the future. We have assessed and analysed your interests and now it is up to you to decide how you want to use them.

You will now see a summary of the careers, subjects and options that you have shortlisted and also the ones that we recommended to you. You can go back to the website at any time to update or change these. Each time you do so, this report will update.

Remember, none of this is set in stone. You can re-visit the website whenever you like, to research study and career options or to update the answers to your questionnaires.

Career Suggestions

The career suggestions that you are about to see have been selected from a list of over 600 occupations. We have short-listed them for you because they match your particular interests.

These are not the only jobs for you to think about. You may have other career ideas that you want to investigate. You can easily do this by visiting our website. Once you add a career to your favourites, it will show up on this report.

Subject Suggestions

The subject suggestions are made based on your results on the various questionnaires but are also graded according to how useful they would be for the suggested careers and any careers which you have favoured. Ideally these will be subject suggestions which both enable your intended career path(s) and which you will find interesting and well suited to your make-up. But sometimes compromises have to be made and if there is a conflict between needing to study a subject to enter your chosen career and your interest in that subject, then it might be best to speak with an Adviser.

Factors to Focus On

Our career recommendations have all been made by measuring many different factors about you, including your specialist interests, working preferences, personality and working style. Some of these may be more important to you than others. On the website, you can select the factors you want to focus on to tell us how much we should take them into account when making our suggestions. You can re-visit this at any time.

You can also decide how far you want to take your studies. Your career suggestions will be amended accordingly.

Career Suggestions

The longer the rating bar, the better suited the subject is to your interests, preferences, career suggestions and also your career favourites. Before finalising your choices, remember to check that your preferred careers and education routes will remain open to you.

This list of careers takes your personal preferences into account. You can manage this by adjusting the mixer on the website.

Further information about each of these careers and subjects is available on www.morrisby.com.

Career suggestions when focusing on Interests as you requested. Selected qualification level: VCE (ATAR < 90) / Cert IV - Diploma

Food Technologist

 100%

Sound / Audio Engineer

 87%

Robotic/Mechatronic Engineer

 86%

Mental Health Worker

 86%

Early Childhood Educators

 85%

Telecommunications Engineer

 85%

Paramedic

 85%

Dental Assistant/nurse

 84%

Myotherapist/Remedial Therapist

 83%

Electronics Engineer – Professional



Paper Technologist



Automotive Engineer



The following careers are closely related to the twelve above, so might also be worth investigating further.

Broadcast Technicians



Electrical Engineer – Professional



Early Childhood/Pre-primary Teacher



Planner

Introduction

This page shows a summary of any careers, subjects or courses that have been suggested or that you have added to favourites when using the tools on the website. These subject suggestions are based on your interests and how useful they might be to you in the future. However, you need to consider any specific subjects required by any intended career routes.

You can add or amend these at any time by going back to the website.

Your Selected Careers

Veterinary Nurse



Garden Designer and Landscaper



Potential Directions

Occasionally people may have the opportunity to reconsider and reassess the direction their career is taking. Below is a list of the areas that seem in line with your make-up, if your experience and qualifications are ignored. You may find a number of these resonate with you and you might even have considered or experienced some of them. The potential upheaval of a total change of direction cannot be ignored but the list might give you some ideas of what you might want to try and incorporate into your working life, should the opportunity arise.

Chemistry



Computer, communications and network engineering



Electrical and electronic engineering



Biology



Music technology



Physics and astronomy



Food and culinary arts



Physiotherapy and related areas



Nursing and healthcare



Mathematics and statistics



Chemical and energy engineering



Materials and metallurgy



Choosing a Career

Throughout this process, we have looked at your aspirations and certain aspects of your personality to suggest and help you discover the different career options available to you. Your career and your future are now in your hands.

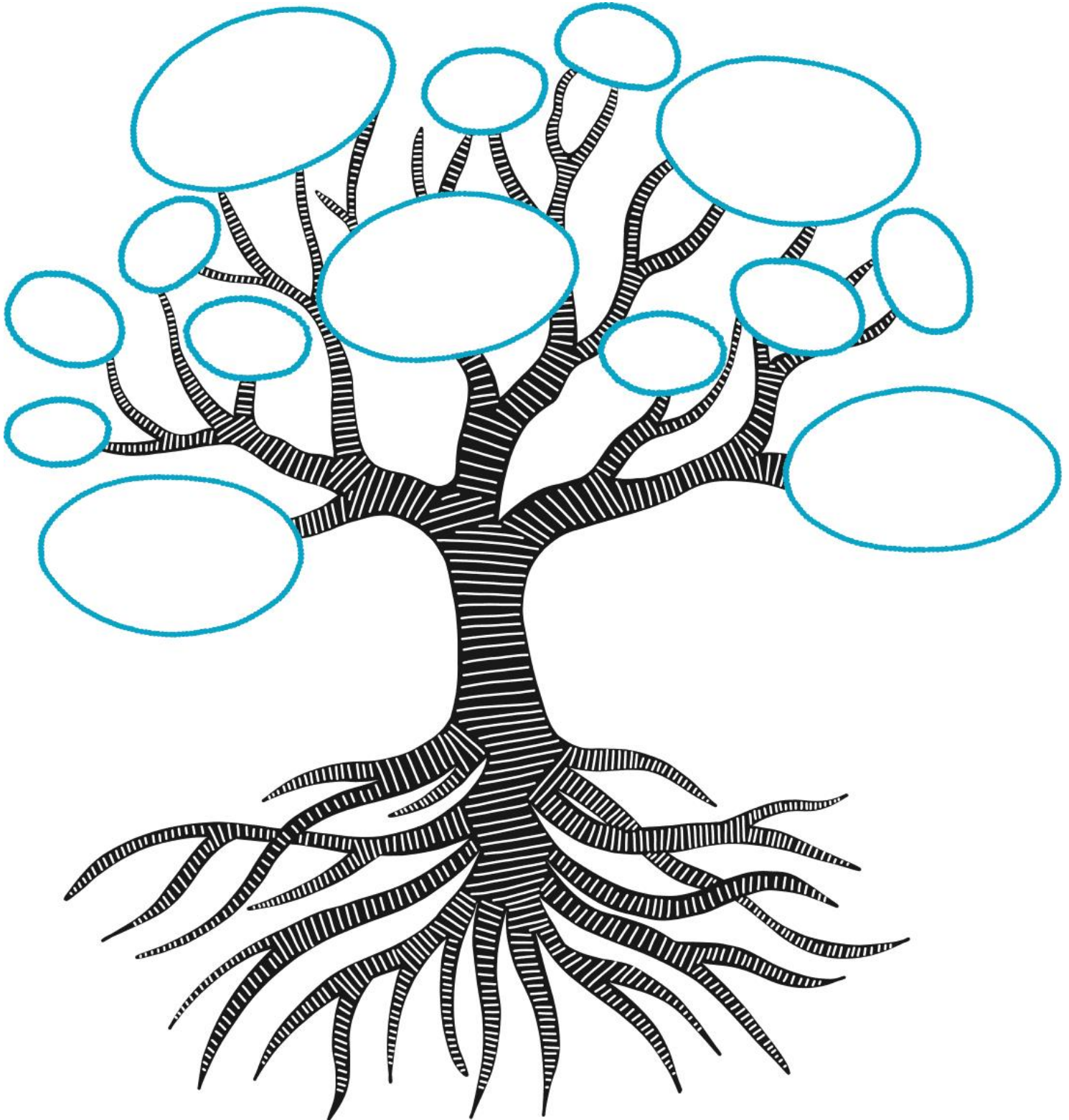
Deciding on a career is one of the most important decisions you will ever have to make, so you need to know as much as possible about yourself, about possible careers and how to go about entering them. After interacting with our website and reading this report and perhaps talking it over with your family and careers adviser, you are probably now aware of where your greatest strengths lie and how they fit in with your interests.

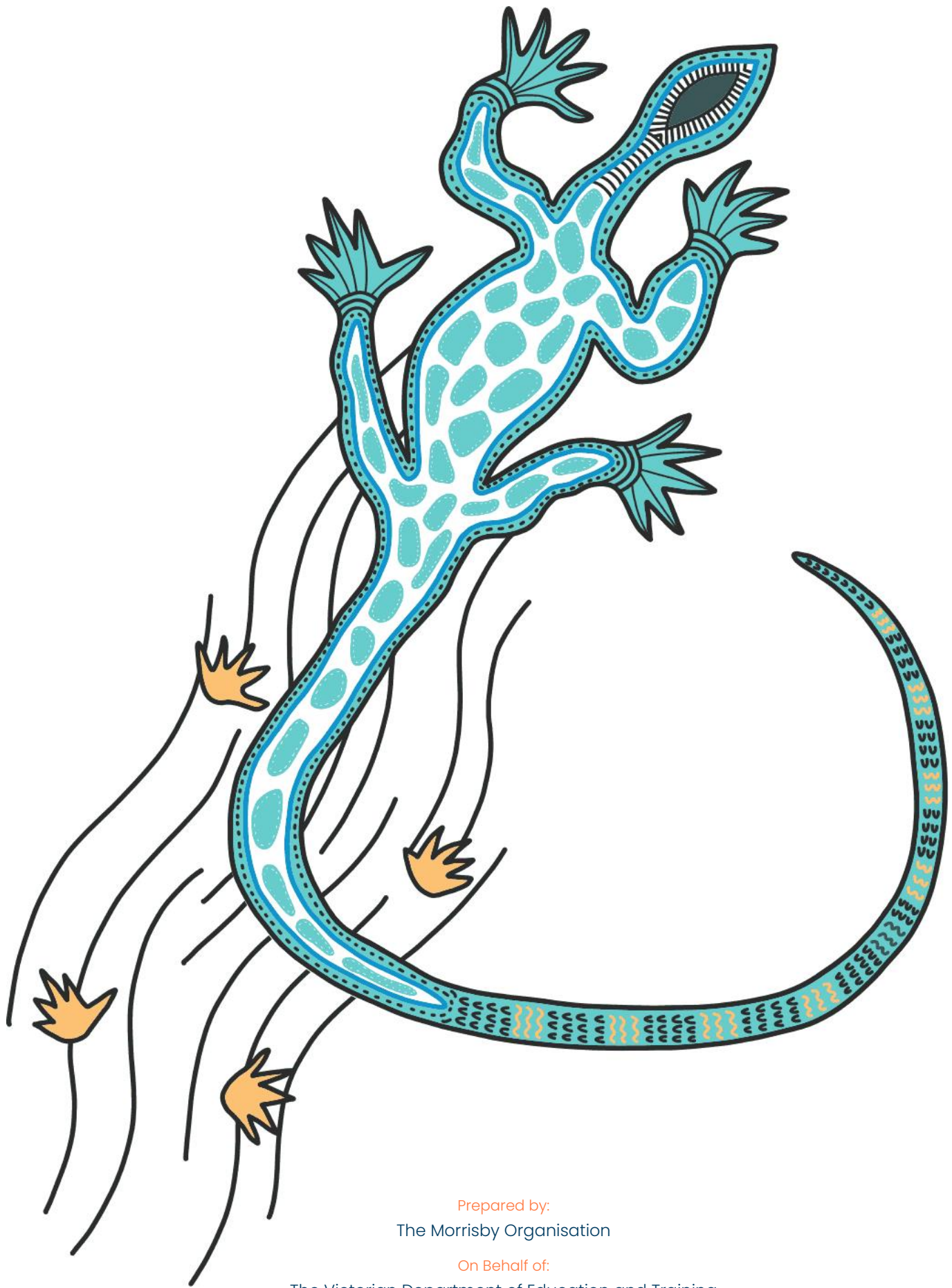
You may need to take action soon, such as deciding on subject choices or whether to pursue further study or a more vocational college course, or apprenticeship. If you are considering subject choices, it is important to make sure that you do not shut off too many options at this point, by dropping subjects which would be essential for a career you are still considering.

We hope that you have enjoyed this process with us and that you have found it to be a thought provoking experience. Do remember that you can log in to our website at any time to return to your results, re-take your aspirations questionnaire and investigate different career options.

My Career Insights

Use this tree to record words that describe your strengths, goals, aspirations. Add them to the leaves, branches and roots. You can complete this activity during your “unpacking” interview, or a little later.





Prepared by:

The Morrisby Organisation

On Behalf of:

The Victorian Department of Education and Training

Support:

support@ceav.vic.edu.au

Cover and Tree Illustrations:

hello@laceyyeomans.com

Further Information:

www.careeranalysts.com.au

Access your Morrisby account at <https://www.morrisby.com>