

My Career Insights
Steve Cole
Murrayside School
01 April 2022



Supporting You

Welcome

Welcome to your Morrisby career analysis.

Whether you are just beginning to consider career or study options, or you are looking for a change in career, we are here to inspire and help you realise your potential.

This report is the beginning of your journey with us. Everything in this document is personalised to you and based on what we have found out about you so far. At any time, you can log in to your personal area on our website, re-visit your results, research the pathways into careers, investigate job specific information and also search for courses and research apprenticeships.

When reading this report, please remember that we are not here to tell you what to do, but to give you the tools and information to support you in making the right decisions for you.

Log-In For Life

No two people are exactly the same. Because tastes, preferences and the things that motivate and inspire us can change over time, you have a log-in to Morrisby Profile for life. This means that you can come back at any time in the future to investigate different options and we can be there to support you at all of the important educational and career decisions you will need to make.

About Us

Deciding on a career is not easy. Understanding the options available to you in the first place is hard enough, but then working out what you are best suited to, and how you can achieve your goals, is difficult.

With our expert analysis, we can help to make your journey easier by giving you the tools to aid your decision making.

- Established in 1967, we are world leading developers of Careers guidance systems and services.
- Experienced providers of matrix accredited and ISO quality assured Careers information, advice and guidance.



Contents

Using This Analysis	3
How to interpret your results	
<hr/>	
Interests	4
Your attitude to working with people, information and things	
<hr/>	
Your Work Style	6
How you go about solving problems, what motivates you and how you like to work	
<hr/>	
Organisational Role	7
Organisation and role that you aspire to	
<hr/>	
Workplace	8
Where you would most like to work	
<hr/>	

Using This Analysis

Introduction

When you took your Morrisby Profile assessments, we took a subjective snapshot of your interests, preferences and motivations.

We then analysed all of your results, which were presented to you on our website. This report is a summary of what you have seen on the website so far. In addition to this report, your own personal webspace also features:

- Career suggestions tailored to your abilities, interests, personality and preferences
- Suggestions for Higher and Further Education based on your make-up and career intentions
- Thousands of links to further information covering careers, education and training

All of the results and recommendations are available both in this report and in a dynamic and interactive format on our website.

Every time you make a change to your preferences on Morrisby Profile, this report will update and you can download it again.

Interests

Introduction

This section examines the findings from the Aspirations Questionnaire. This asked you about your career interests, your specialist interests and any preferences you might have about your work environment, the type of organisation or your role within it. Your results are shown and described on the following five pages. On the website you will also find a breakdown showing how well your results support working in each of 49 different career areas.

Your Interests

We asked you questions about your attitude to working with people, information and things and how important each one was to you. You can see the results below. Remember, this is based on what you told us and you can amend your responses at any time.

You

- > Commerce
- > Analysing
- > Caring
- > Supportive
- > Advising
- > Instructing

People



Information



Things

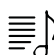


You are most interested in a career dealing with numerical records and quantitative analysis. This often means working in commerce or finance; banking, insurance, trading and brokerage, risk analysis and accountancy. However, all organisations require some numerical analysis so it's an area with many and varied opportunities. Additionally you appear interested in a career where you care for other people on a daily basis. Perhaps young children, or

the elderly or others who for some reason or another need help in looking after themselves. You also show some interest in a career path where you help other people to get the most out of their lives. This includes education in the broadest sense, counselling, advice and guidance. You would enjoy helping people to achieve their true potential. The results show that you are not interested in working as a scientist or other career relying on the scientific methods of hypothesis testing through experimentation, observation and analysis. Additionally you are not interested in a career working as an artist or designer, where success is dependent upon the aesthetic quality of the item you create.

Your Specialist Interests

Specialist Interests may form an important part of your career choice, or you might prefer to keep them separate to your job. You can decide on how much they should influence your career suggestions by selecting "Specialist Interests" when choosing what to focus on, on the website.

 Music

Of the five areas (music, sport, performing arts, languages, art & design) you seem very interested in music. You are least interested in languages.

Your Work Style

Work Style

Here we are looking at how you go about solving problems, what motivates you and how you like to work. The graphs below are based on what you have told us so far.



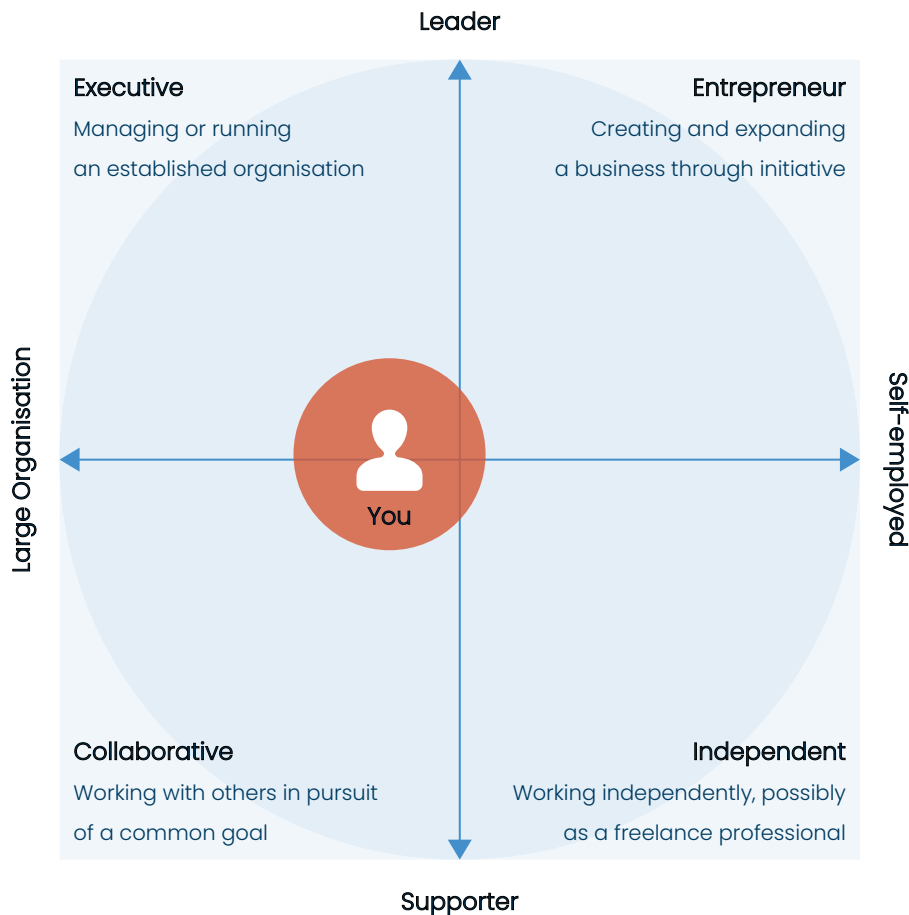
You are comfortable with the idea of being the leader within a large group of people. You are happy to take responsibility for the actions of others and could therefore develop a career managing and/or advising other people. The results show that you prefer to make your own decisions. Whilst you are happy to seek help from others when appropriate, you don't want someone else telling you what to do and how to do it. You are self-sufficient and able to think for yourself but you could also fit into a team. You are quite industrious and are prepared to put in the effort to achieve your goals, but not to the extent of dedicating your entire life to them. You don't see yourself as a creative problem solver. You prefer to work in a more down-to-earth and logical way. You are more concerned with finding a workable solution than an overly novel and untested one. You don't seem very ambitious. Your answers suggest that you are not concerned with how other people see the value of your work - it is how you feel it about yourself that matters most to you.

You

- > Leader
- > Executive
- > Modest
- > Obliging
- > Realistic
- > Logical

Organisational Role

This graph shows the type of organisation and role that you aspire to. We work this out by looking at your preferred role in an organisation (from team member to leader) and comparing it with the type of organisation you want to work in (from a large multi-national, to working for yourself) You may find that these attitudes can change over time, remember, you can update the results by re-taking the aspirations questionnaire.

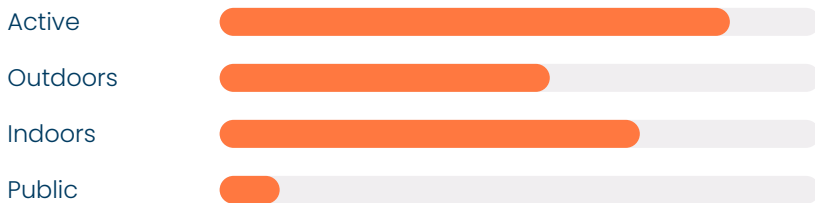


You would probably be equally content in a variety of roles, but would prefer working for an established, structured organisation which would offer some support and stability. You seem happy to lead a team when required but equally content to pitch in with your colleagues. You would like to stand-out but not be completely independent.

Workplace

Your Preferred Work Environment

This is what you told us about where you would most like to work; whether you prefer the idea of being inside or outside and how important it is to you to work alone or with others.



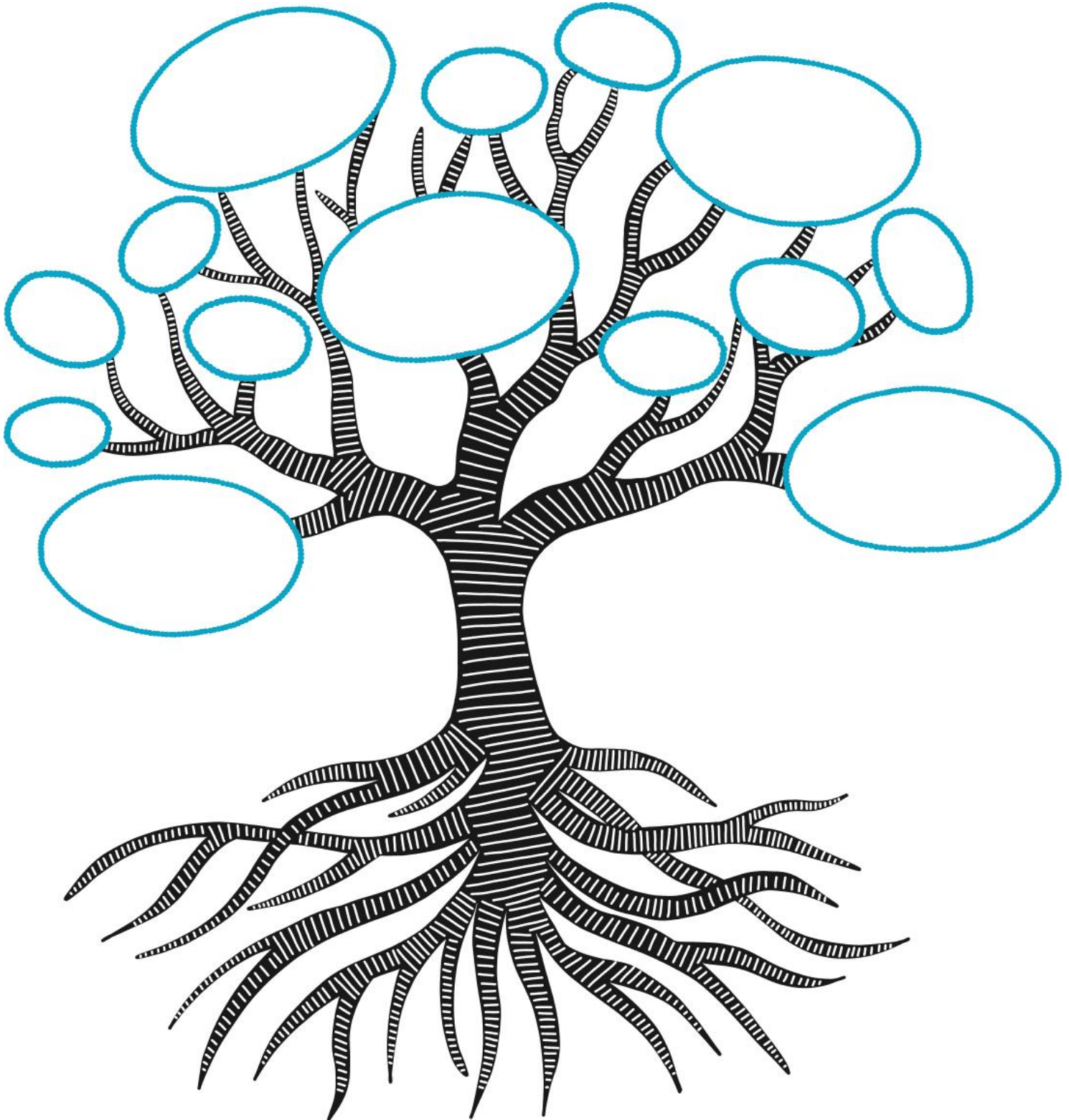
From your answers, you would like to work in pleasant and comfortable surroundings and also keep active - not completely desk-bound. In many large premises there are opportunities to keep active. Many office workers make use of a gym or fitness studio to keep fit. You are not keen on a job dealing with the general public. Working with the public can require considerable patience - possibly a little more than you feel you have.

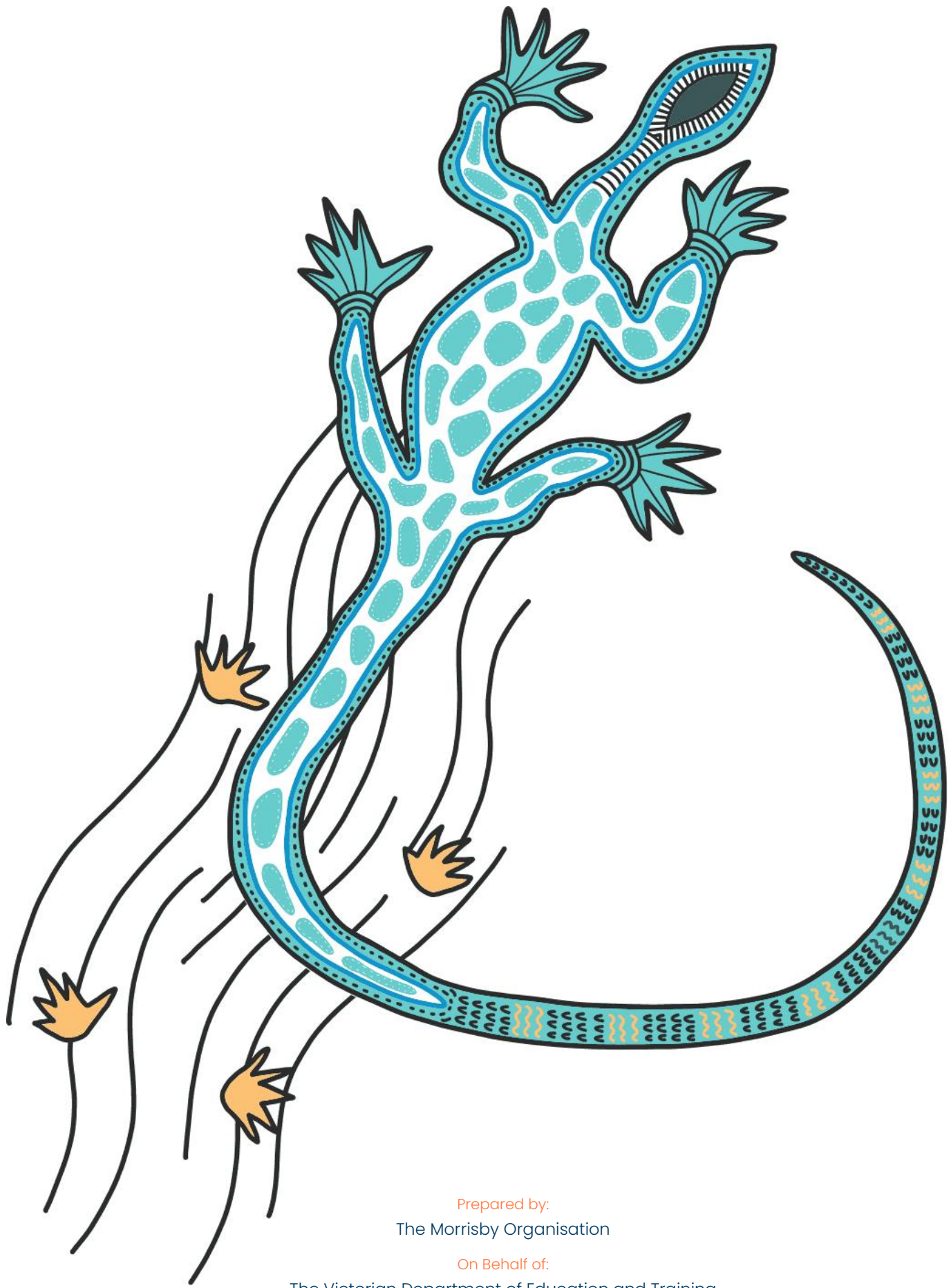
You

- > Work with Friends
- > Active
- > Nice Surroundings

My Career Insights

Use this tree to record words that describe your strengths, goals, aspirations. Add them to the leaves, branches and roots. You can complete this activity during your “unpacking” interview, or a little later.





Prepared by:

The Morrisby Organisation

On Behalf of:

The Victorian Department of Education and Training

Support:

support@ceav.vic.edu.au

Cover and Tree Illustrations:

hello@laceyyeomans.com

Further Information:

www.careeranalysts.com.au

Access your Morrisby account at <https://www.morrisby.com>