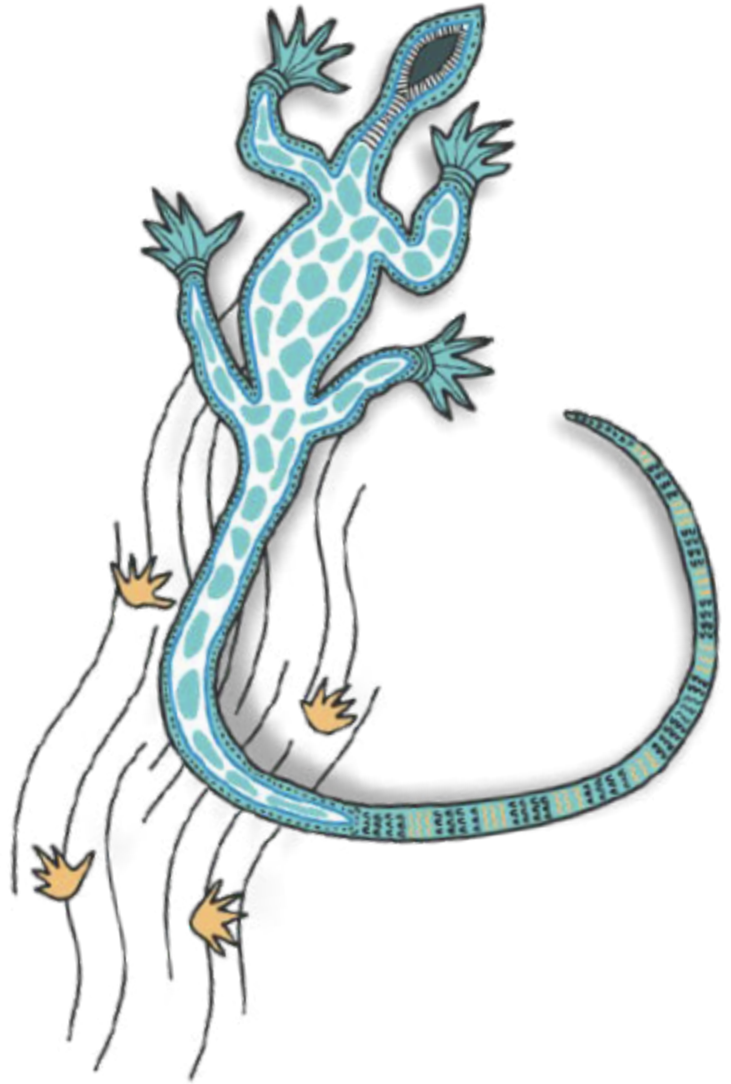




Certificate of Completion

My Career Insights Sample Candidate

CEAV Enterprise Centre
April 2023



Well done on completing your Morrisby profile.

Participation in an unpacking interview will step you through some key points in relation to your profile.

You can access your interactive results via the online portal at www.morrisby.com and we recommend that you do this.

Via this online portal you can download a more comprehensive PDF report than this summary as well as share your results with others.

The online presentation provides the ability to customise your results so they best reflect who you are and your preferences. If you have had an unpacking interview the summary notes from this are also available online and from your comprehensive PDF report.



Department
of Education

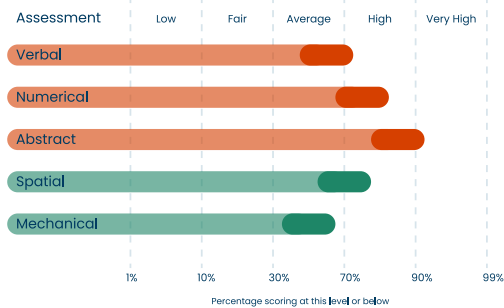


careeranalysts

Your career insight results

Aptitudes

Completed 2/3/2019



Your high abstract result, lower numerical and verbal results suggest that you might prefer working with real objects, diagrams, plans and quantitative analysis. These are useful skills for engineering, technology and some commercial areas. You may prefer learning from charts, models, videos and your own experiences rather than just from books or lectures.

You could look at careers which match this pattern, such as science and laboratory work, technical design, surveying, engineering, as well as working with computers and data processing and many commercial careers such as banking, insurance, finance and so on.

Career Interests

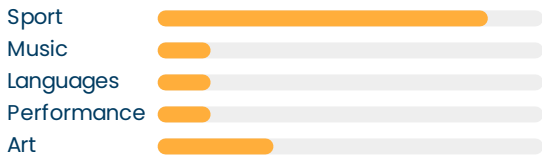


You are most interested in a career path where you help other people to get the most out of their lives. This includes education in the broadest sense, counselling, advice and guidance. You would enjoy helping people to achieve their true potential. The results suggest that you might also enjoy scientific methods and research. In the purest sense this might be physics, chemistry or biological research but you also need to remember computer science, forensics, materials, geology, meteorology, psychology and many others, all of which rely on the scientific method.

Additionally you appear interested in a career where you care for other people on a daily basis. Perhaps young children, or the elderly or others who for some reason or another need help in looking after themselves. Additionally you might consider the types of career where you would be working with people in a professional, rather than personal manner. You would enjoy guiding them to make the best decisions. This might include management, sales, politics, marketing, advertising, broadcasting and many others. You also show some interest in a career dealing with numerical records and quantitative analysis. This often means working in commerce or finance; banking, insurance, trading and brokerage, risk analysis and accountancy. However, all organisations require some numerical analysis so it's an area with many and varied opportunities.

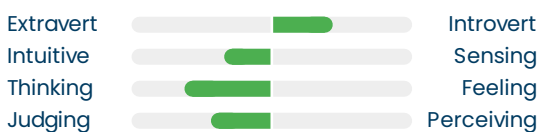
Your specialist interests suggest that of the five areas (music, sport, performing arts, languages, art & design) you are most interested in sport.

Specialist Interests



Personality

Type: INTJ - Scientist



- ✓ Realistic
- ✓ Rational
- ✓ Logical
- ✓ Independent
- ✓ Insightful
- ✓ Reasoned

Independent, innovative and insightful but potentially a little hard to please. Theoretical in outlook with a strategic, logical approach with a scientific methodology. Self-assured, ambitious, organised and likely to expect high standards from self and others.

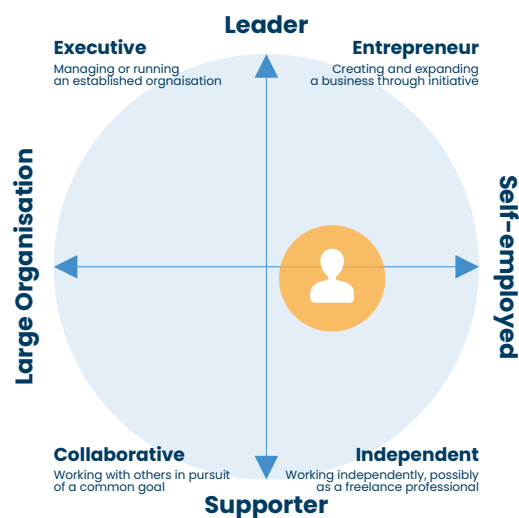
When you make decisions you prefer to adopt an analytical approach, and work out the most logical solution to a problem. Whilst you accept that some decisions are based on feelings rather than facts, you are keen to find the technically correct solution even if it will not be received well by others.

You would prefer a well ordered and structured lifestyle. Whilst you enjoy occasional surprises, you prefer the important things in life to be well thought through, organised and as definite as possible. Some things need to be planned well in advance to ensure you get the most out of them.

Also of importance is your introversion result. Whilst sociable, you seem content with your own company and are happy to work on projects independently. Perhaps you might seem reflective and a little reserved to others. You don't seek out an audience for your activities but enjoy joining in with others. You show a preference for developing ideas, mentally exploring new possibilities and breaking with tradition. You are keen to use your imagination and are comfortable in the worlds of art, literature and emotions.

Work Style

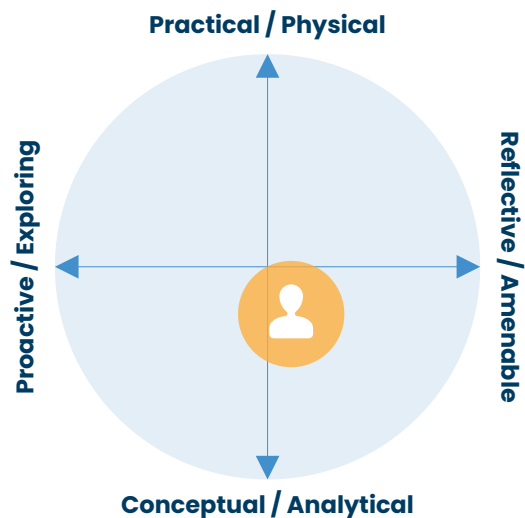
Your preferred role



- ✓ Determined
- ✓ Industrious
- ✓ Ambitious
- ✓ Purposeful
- ✓ Smaller company
- ✓ Independent

Learning Style

Your preference



- ✓ Considered
- ✓ Autonomous
- ✓ Mindful

Your suggestions and favourites

The suggestions reflect your chosen academic level VCE (ATAR under 90). You can explore many further suggestions at various levels of qualification by visiting your Morrisby account. Careers and subjects favourites in your Morrisby Online Profile will be highlighted with a heart icon.

Careers

- ♥ Pharmacist
- ♡ Nutritionist/ Nutritional Therapist
- ♥ Optometrist
- ♡ Town Planning Technician
- ♡ Laboratory Technician
- ♡ Dispensary Technician
- ♡ Bank / Building Society Manager
- ♥ Pharmacologist
- ♡ Sports Facility Manager
- ♡ Chemical Plant Technician
- ♡ Events Co-ordinator
- ♥ Mechanical Engineering Assoc/Tech

16+ Subjects

- ♡ Chemistry
- ♡ Biology
- ♡ Physics
- ♡ Mathematical Methods
- ♥ General Mathematics
- ♥ VCE (VET) Business
- ♥ VCE (VET) Engineering
- ♥ VCE Vocational Major - Literacy
- ♥ VCE Vocational Major - Numeracy
- ♥ VCE Vocational Major - Personal Development Skills
- ♥ VCE Vocational Major - Work Related Skills
- ♥ VCE (VET) Electrical Industry

Post School Subjects

- ♡ Pharmacy and pharmaceutical science
- ♡ Optometry and eye-care
- ♡ Medicine
- ♡ Health and medical sciences
- ♡ Psychology
- ♡ Nutrition, dietetics and food
- ♡ Hospital sciences
- ♡ Health education, management and promotion
- ♡ Biochemistry and biotechnology
- ♡ Chemistry
- ♡ Sports science and coaching
- ♥ Mechanical engineering

Notes

During your unpacking interview, use this section to record any additional careers or subjects you are interested in, or any other relevant notes.

Careers

Subjects

Other

Where next?

Accessing your Morrisby Account

Your Morrisby account contains vastly more information about you, your options, and the pathways and destinations available to you.

- Go to **morrisby.com** and login using the details created at registration.
- Click the forgotten password link if you can't remember your login details or ask career staff at school to provide you with a recovery code.
- Once logged in, use the Settings Cog to edit any personal details and add your personal email address as a secondary email. This ensures that you will be able to retain access once you leave school.
- From your main account page, you can also invite your parents or guardian to access to your account. All you need is their email address.
- Upload your report to your My Career Portfolio.
- You can retake the assessments with help from careers staff at school, add your achievements and preferences, and revisit the portal to explore your options at any time.

You have access to your Morrisby account for life as long as you login at least once every 5 years. Your Morrisby account is an excellent career education resource during subject selection, pathway counselling, and during any school transition.



Visit morrisby.com