

My Career Insights

Parent Resource



Supporting
your child's use
of their Morrisby
Profile in Years
11 and 12

How can my child use the Morrisby Profiling tool in Years 11 and 12?

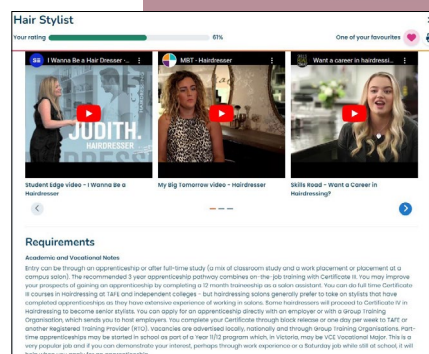
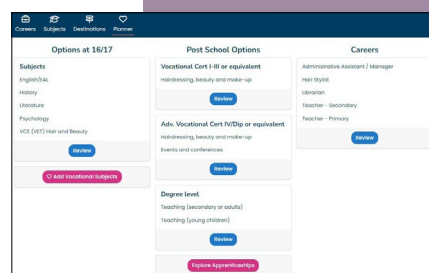
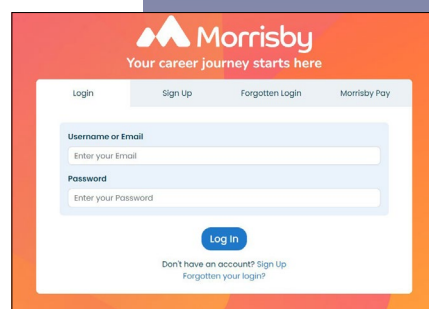
Morrisby is an interactive, online profiling tool used to support your child's career journey based on their aptitudes, interests, personality and career goals. As your child progresses through their senior years of schooling, their profile provides a wealth of resources regarding post school options, enabling your child to make informed decisions about their future following secondary school.

How you can support your child to use their Morrisby Profile in Years 11 and 12

You can support your child by encouraging them to login to their profile at app.morrisby.com and revise their information and choices so that as they change, their profile changes with them. Encourage your child to redo the Aspirations and/or Personality questionnaire – interests can change across these formative years as experience is gained. Your child has access to an instructional guide on logging in to their profile which includes information on how to reset their password if they have forgotten it.

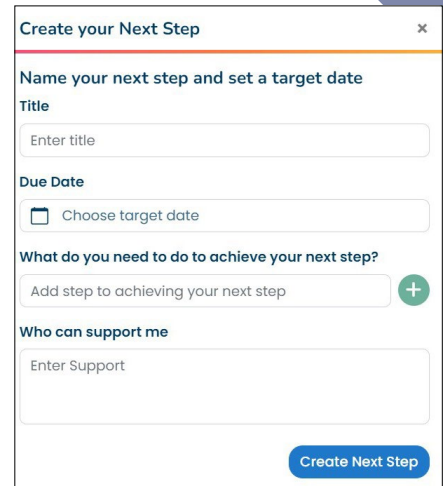
Read through your child's profile with them and encourage them to complete any steps they might have missed. We encourage students to retake questionnaires each year to reflect on who they are now and how their choices are changing.

Use the 'Planner' tab to get an overview of the subjects your child is studying and the careers they are interested in. Explore the post school options and research these together and make note of any prerequisites or special requirements the pathway they have chosen might require.

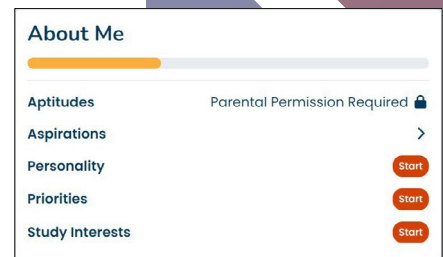


Have a conversation about the education and training your child may need and the options available to them. You might consider the location of the course, the cost, and any of the entry requirements needed. You might also consider exploring the organisations in your region that can assist with apprenticeships and employment.

Help your child plan the steps they need to take to progress on their career journey. Morrisby has an interactive 'Next Steps' planning tool to help keep track of any steps to take along the way. Try creating some steps together to help your child on their journey.



The screenshot shows a web form titled "Create your Next Step". It includes a text input for "Title", a date picker for "Due Date", a list of steps for "What do you need to do to achieve your next step?", and a text input for "Who can support me". A blue "Create Next Step" button is at the bottom right.



The screenshot shows a profile page titled "About Me". It features a progress bar and a list of sections: "Aptitudes" (with a lock icon and "Parental Permission Required"), "Aspirations", "Personality", "Priorities", and "Study Interests". Each section has a red "Start" button.

Please note: If you find that your child does not have access to the aptitudes assessment, this could be because a response was not received with your consent to participate in year 9. The full profile is useful for gaining a more detailed understanding of your child's strengths and capabilities. Full profiling, including aptitudes questionnaires, will become available to your child once they turn 18, or when parental permission is granted to the school. Please speak with your school career staff if you would like access to the aptitudes questionnaires arranged for your child.

For further information please visit:

- My Career Insights
- Morrisby Australia
- Your school's career office

